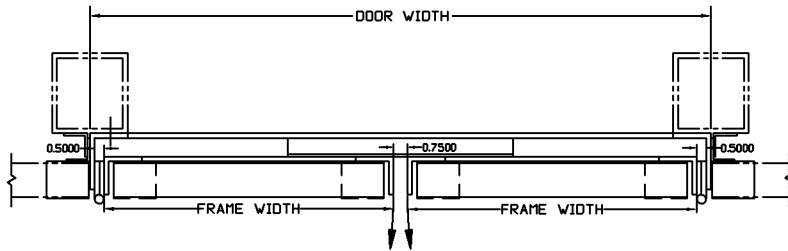


# HINGED 2" DEEP EQUIPMENT SCREEN DOUBLE DOOR WITH SUBFRAME FOR MOUNTING



HORIZONTAL SECTION

SUBFRAME - 3"x2"x1/4" ALUMINUM ANGLE

HINGE - HEAVY DUTY 0.120" THICKNESS ALUMINUM CONTINUOUS PIANO HINGE (0.250" PIN DIAMETER)

BLADE - 0.063" THICKNESS TYPE 6063-T5 EXTRUDED ALUMINUM

FRAME - 2"x2"x1/4" ALUMINUM ANGLE

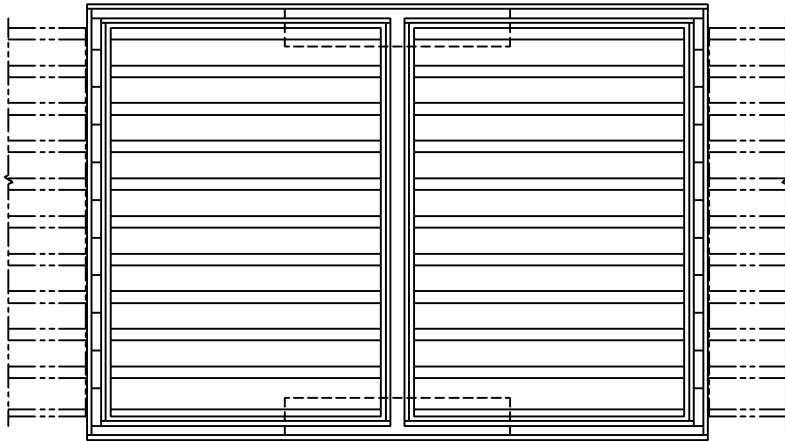
DOORSTOP - 2"x1"x1/8" ALUMINUM ANGLE

DESIGNED FOR 100 MPH WIND LOAD

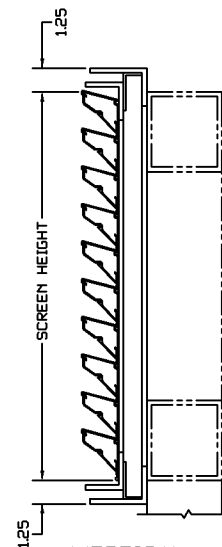
SIZES 24" WIDE X 12" HIGH UP TO 96" WIDE X 96" HIGH

LATCHING - BY OTHERS (NOT INCLUDED)

MODEL V2KS SHOWN - HINGED OPTION IS AVAILABLE ON ALL EQUIPMENT SCREEN MODELS



ELEVATION



VERTICAL SECTION

## ARCHITECTURAL L·O·U·V·E·R·S

266 W Mitchell Ave - Cincinnati, OH 45232  
PH: (888) 568-8371 Fax: (888) 568-8370

PROJECT

CONTRACTOR

ARCHITECT

DRAWN BY:  
JMC

DATE:  
09/2017

DRAWING TYPE:  
TECHNICAL SHEET

DRAWING TITLE:  
HINGED 2ES DBL DOOR