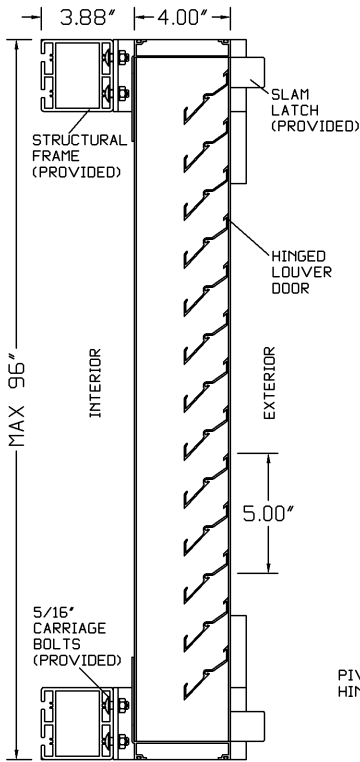
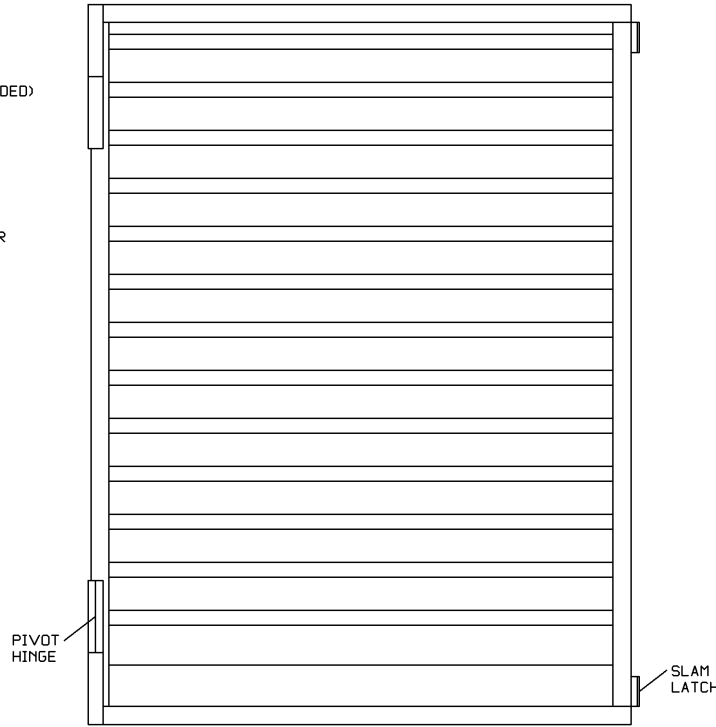


V2KSD - 2" DEEP 45 DEGREE STORM K BLADE EXTRUDED ALUMINUM LOUVERED EQUIPMENT SCREEN



SECTION VIEW



ELEVATION VIEW
(LEFT HINGE SHOWN)

LOUVER BLADE - 0.063" THICKNESS
TYPE 6063-T5 EXTRUDED ALUMINUM

LOUVER FRAME - 0.081" THICKNESS
TYPE 6063-T5 EXTRUDED ALUMINUM

STRUCTURAL FRAME - 3" X 3" AND
1.5" X 1.5" STRUCTURAL ALUMINUM
MODULAR FRAMING - TYPE 6063-T5

HINGE - 3/8" PIN DIAMETER 1/8"
THICKNESS HEAVY DUTY ALUMINUM
PIVOT HINGE - TYPE 6063-T5

LATCH - STANDARD SLAM LATCH

FASTENERS - STAINLESS STEEL TEK
SCREWS, 5/16-18 CARRIAGE BOLTS,
NUTS, AND WASHERS

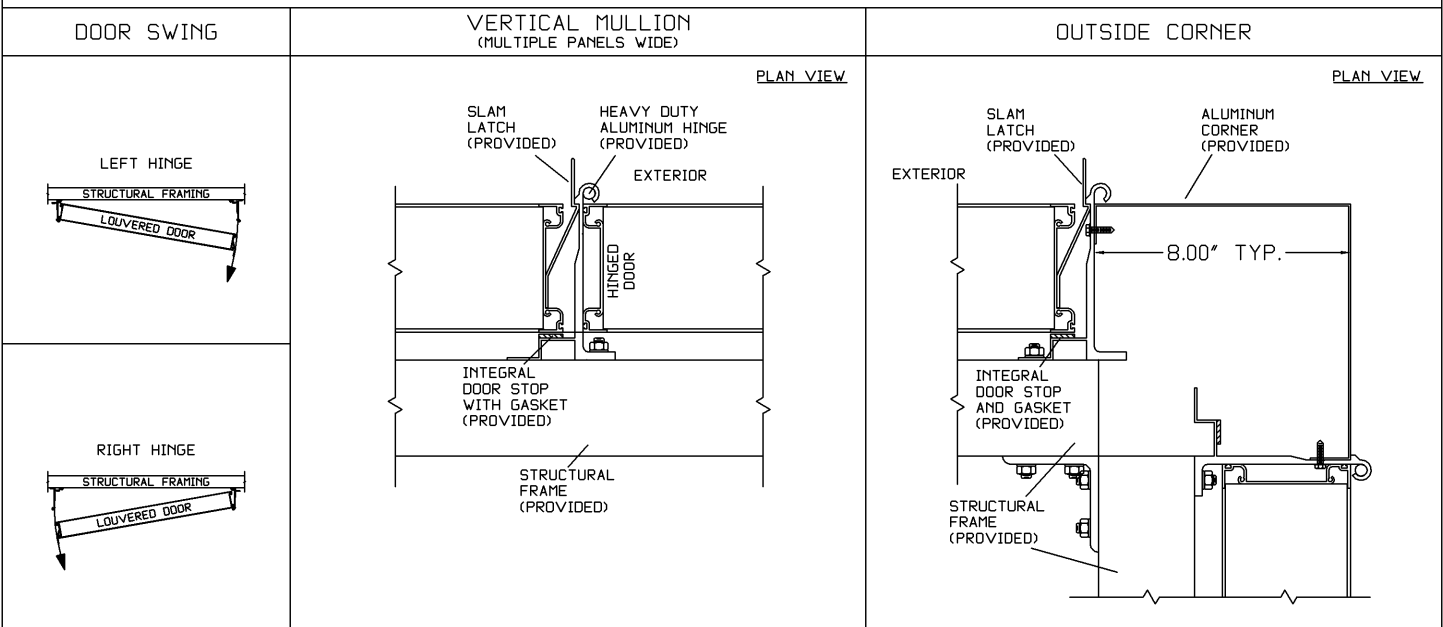
DESIGNED FOR 30 P.S.F. WIND LOAD

SIZES 24" WIDE X 24" HIGH UP TO
UNLIMITED WIDE X 96" HIGH

OPTIONS:

- LOCKING LATCH
- HIGHER WIND LOAD RATINGS
- ARCHITECTURAL FINISHES

*1, 2, 3, OR 4 SIDED SCREEN
CONFIGURATIONS (SEE TECHNICAL
SHEET "DIRECT MOUNT
CONFIGURATIONS")



ARCHITECTURAL L·O·U·V·E·R·S

266 W Mitchell Ave - Cincinnati, OH 45232
PH: (888) 568-8371 Fax: (888) 568-8370

PROJECT

CONTRACTOR

ARCHITECT

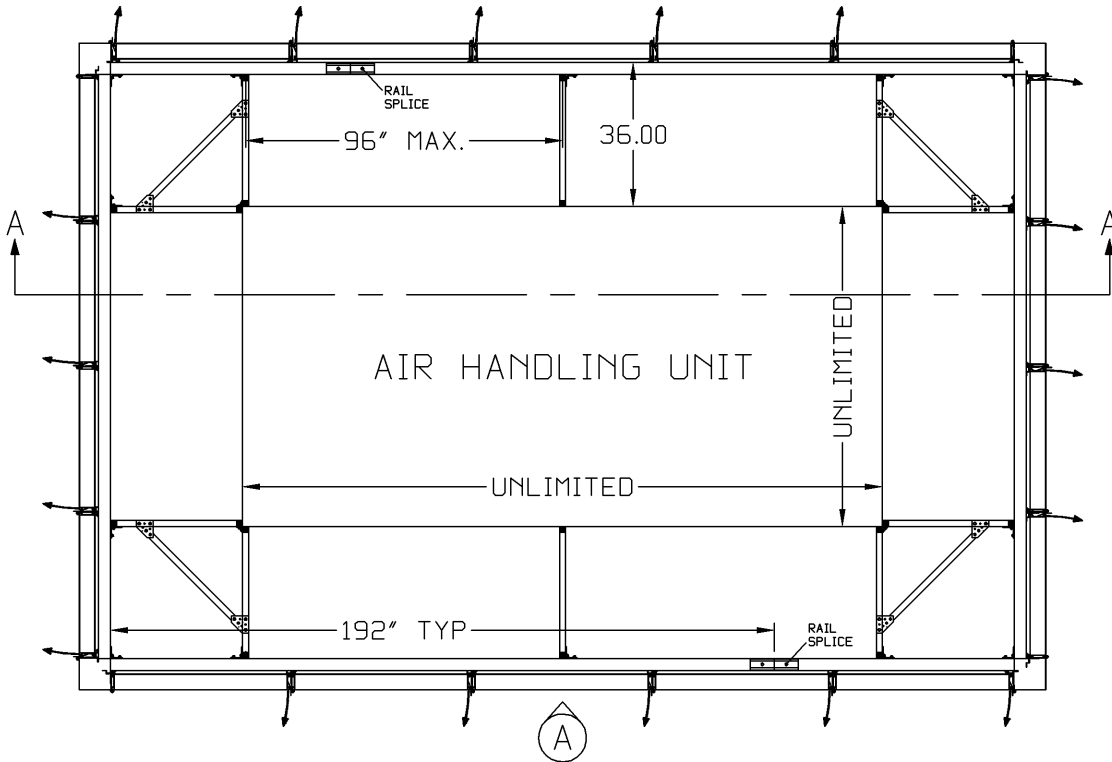
DRAWN BY:
JRR

DATE:
01/2013

DRAWING TYPE:
TECHNICAL SHEET

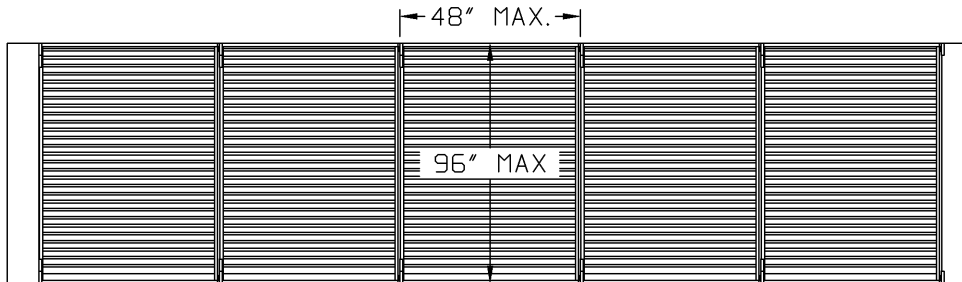
DRAWING TITLE:
V2KSD.2

V2KSD - 4" DEEP 45 DEGREE STANDARD J BLADE EXTRUDED ALUMINUM LOUVERED EQUIPMENT SCREEN



PLAN VIEW

*4 SIDED CONFIGURATION SHOWN. ALSO AVAILABLE IN 1 SIDED, 2 SIDED, OR 3 SIDED CONFIGURATIONS.



ELEVATION A



SECTION A-A

**ARCHITECTURAL
L·O·U·V·E·R·S**

266 W Mitchell Ave - Cincinnati, OH 45232
PH: (888) 568-8371 Fax: (888) 568-8370

PROJECT

CONTRACTOR

ARCHITECT

DRAWN BY:
JRR

DATE:
01/2013

DRAWING TYPE:
TECHNICAL SHEET

DRAWING TITLE:
V2KSD.2